



6111 SHAKESPEARE RD. COLUMBIA, SC, 29223 | 800-845-7750 | SHAKESPEARE-MARINE.COM

FELLECS TECH

Ihr Partner für Funktechnik

www.fellecs-tech.com

inbox@fellecs-tech.com





SOLUTIONS ARE IN THE SCIENCE

Since 1897, Shakespeare® has been a leader in quality and innovation. William Shakespeare Jr. started the company as a fishing reel manufacturer, but soon expanded into manufacturing of fishing line and fiberglass fishing rods. Through innovation in the fiberglass rod manufacturing, the company started making fiberglass antennas in the early 1950s and has since then grown to become a world leading manufacturer of marine and military antennas.

Today, Shakespeare® is a global marine electronics brand with a reputation for superior quality, performance, and durability. With manufacturing and distribution centers in Asia, North America and Europe, we are positioned to deliver excellent service to our customers worldwide.





ENTERTAINMENT & CONNECTIVITY

2-7



VHF ANTENNAS

12-19



AIS ANTENNAS

20-23



BROADBAND ANTENNAS

24-27



AM/FM ANTENNAS

28-31



SSB ANTENNAS

32-33



CB ANTENNAS

34-35



ACCESSORIES

38-48

SHAKESPEARE® TIPS FOR...

CHOOSING THE RIGHT **ANTENNA** 8-11

CHOOSING THE RIGHT **MOUNT** 39

CHOOSING THE RIGHT **CABLE** 44



ENTERTAINMENT & CONNECTIVITY

SHAKESPEARE

STREAM®



MODEL NO.
CA-STREAM

DB
50dB

CONNECTION
FME-Male (Both Ends) Booster,
N-Type Female, External
Antenna

SUGGESTED MOUNT
Included

VSWR
≤2.0

FREQUENCIES
698-716 (728-746) / 776-787
(746-757) / 824-849 (869-894) /
1850-1915 (1930-1995) /
1710-1755 (2110-2155) MHz

STANDARD SUPPORTED
CDMA, WCDMA, GSM, EDGE,
HSPA+, EVDO, LTE and all
cellular standards

THROUGHPUT
100+ Mbps

POWER
5-15VDC, 2.1A Max. @ 12 VDC



Designed for boats of all sizes, the Shakespeare Stream® uses state-of-the-art marine cellular booster technology to amplify the signal from cellular devices along inshore, coastal and popular cruising routes, enabling boaters to take full advantage of their data plans to bring internet onto their boat*.

SHAKEPEARE STREAM® WIRELESS BOOSTER

- **Compatible with cellular-enabled tablets, phones, mobile hotspots or other cellular devices**
Utilize your existing devices and cellular service on the go
- **5-Band amplifier**
Works with all AT&T, T-Mobile and Verizon 5G, 4G, & 3G bands in the US and other major Canadian networks
- **High quality marine grade materials and design**
Extended lifespan of the antenna
- **FCC certified**
Automatic gain control and shutdown does not allow interference with the cell towers

*Compatible with most cellular devices and major cellular service providers in the US and Canada.

SuperHALO®



MODEL NO.
CA-VAT-10-R

DB
50dB

CONNECTION
FME-Male (Both Ends) Booster,
N-Type Female, External
Antenna

SUGGESTED MOUNT
Included

VSWR
≤2.0

FREQUENCIES
698-716 (728-746) / 776-787
(746-757) / 824-849 (869-894) /
1850-1915 (1930-1995) / 1710-
1755 (2110-2155) MHz

STANDARD SUPPORTED
CDMA, WCDMA, GSM, EDGE,
HSPA+, EVDO, LTE and all
cellular standards

THROUGHPUT
100+ Mbps

POWER
5-15VDC, 2.1A Max. @ 12 VDC



The SuperHALO® is a marine grade 5G, 4G, & 3G voice and data cellular reception* solution optimized to boost cellular reception for your boat, car, recreational vehicle, home or anywhere else, with support of 7+ users simultaneously and an indoor antenna to direct the signal where you really need it.

SUPER HALO® WIRELESS BOOSTER

- **5-Band amplifier**
Works with all AT&T, T-Mobile and Verizon 4G and 3G bands in the US and other major Canadian networks
- **Works on 7+ devices simultaneously**
Compatible with phones and mobile hotspots
- **Automatic gain control (AGC) adjusts without dials**
Allows for an easy installation
- **High quality marine grade materials and design**
Extended lifespan of the antenna
- **FCC certified**
Automatic gain control and shutdown does not allow interference with the cell towers.

*Compatible with most cellular devices and major cellular service providers in the US and Canada.

FELLECS-TECH Handelsgesellschaft mbH
inbox@fellecs-tech.com | +49 40 707 00 98 - 0 | www.fellecs-tech.com

GALAXY®



The Galaxy 5239 antenna is our smallest Galaxy antenna, but don't let the size fool you. This World-band antenna provides coverage for 5G, 4G, 3G, and WLAN systems for Cellular, PCS, AWS and LTE frequencies, as well as 802.11n Wi-Fi. This compact, feature rich antenna is at home on virtually any watercraft, and is fitted with a stainless steel ferrule and N-connector that are compatible with all Shakespeare® 1" -14 threaded mounts.

GALAXY® CELLULAR/WIFI ANTENNA

- Full Band (698 – 2700 MHz) Broadband
- 2G/3G/4G and WLAN systems
- Wi-Fi 802.11n compatible
- Designed for marine use

MODEL NO.	5239
HEIGHT	9.25"
SECTIONS	1
DB	2-3dB @ 698-960 / 3-4dB @ 1700-2700 MHz
CONNECTION	N-female on base (No cable included)
SUGGESTED MOUNT	Included
MAX INPUT POWER	100 Watts
VSWR	≤ 1.8
FREQUENCIES	698-960 / 1700-2700 MHz
STANDARD SUPPORTED	CDMA, WCDMA, GSM, EDGE, HSPA+, EVDO, LTE and all cellular standards
THROUGHPUT	100+ Mbps
POWER	5-15VDC, 2.1A Max. @ 12 VDC

SeaWatch®



DB
30dB

CONNECTION
F connector included

FREQUENCIES
VHF: 47-230MHz;
UHF: 470-862MHz

COLOR/FINISH
White/Nylon

POWER
DC 12V, AC 110V



The SeaWatch® series of TV antennas are omni-directional, over-the-air digital HDTV solutions that bring sleek lines and 360° high-performance coverage to your watercraft or RV. Designed to accept common 1"-14 threaded mounts, the antennas are well suited to fit virtually any application.

SEAWATCH® TV ANTENNAS

- Receives all local HD broadcast signals
- Low noise amplifier
- Omni-directional

3004

HEIGHT
8" x 4"
RANGE FROM BROADCAST TOWER
15 Miles



3015

HEIGHT
15" x 3"
RANGE FROM BROADCAST TOWER
45 Miles



3019

HEIGHT
19" x 3"
RANGE FROM BROADCAST TOWER
75 Miles



GALAXY®



MODEL NO. SRA-50

HEIGHT

Flush Mounted

2.45in x 0.75in (6.22cm x 1.9cm)

Low Profile Mounted

3.6in x 1.30in (9.14cm x 3.3cm)

1"-14 Thread Mounted

3.6in, 3.46in (9.14cm, 8.8cm)

Pedestal Mounted

3.6in x 3.94in (9.14cm x 10cm)

CONNECTION

Push on style, single input
SMB (Radio), TNC Connector
(Antenna), 25' Cable included

COLOR/FINISH

White/Fiberglass

Using the latest satellite radio technology, this SiriusXM® approved accessory meets or exceeds the most recent specifications set forth by SiriusXM®. This antenna is compatible with all radios and docks that work on the SiriusXM® network with a push on style, single input SMB connector. This antenna can be mounted on nearly any surface with 4 different mounting options.

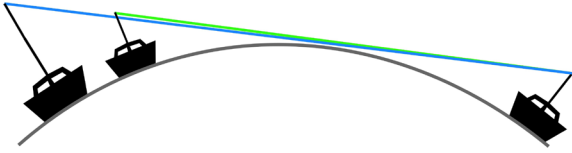
SIRIUSXM™ ANTENNA

- **4-way mounting system**
Flexibility to choose from 4 ways to mount your SRA-50
- **White UV-stabilized housing**
Resistant to discoloration
- **Multiple mounting options**
Flush Mounting, Low-Profile Mounting, Mounting on Standard Mounts, and Pedestal Mounting



CHOOSING THE RIGHT ANTENNA

STEP 1 HEIGHT

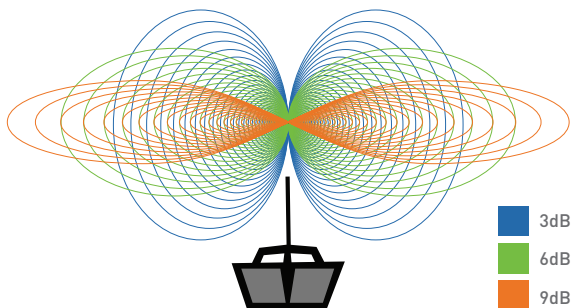


When deciding on an antenna, height is of paramount importance. For clearing low bridges or other obstacles, consider a ratchet-style antenna mount to avoid damaging the antenna..

TIP

The higher an antenna is mounted, the greater your range

STEP 2 GAIN (dB)



Gain is the transmission pattern of your antenna, measured in decibels (dB). The higher the dB the farther the range.

- As gain increases, beamwidth is narrowed.
- **Small, lightweight boats**, which tend to roll excessively in heavy seas, normally do not use an antenna with a gain rating higher than 6dB.
- **Larger or more stable vessels** can use higher gain antennas effectively.

TIP

3 dB GAIN

Usually a 4' antenna. Best suited for powerboats under 24' or sailboats.

6 dB GAIN

Usually an 8' antenna. Best suited for boats over 24'.

9 dB GAIN

Usually any antenna 12' or taller. Best suited for boats over 32'.

STEP 3

PERFORMANCE, DURABILITY, & OTHER FEATURES

ELEMENT TYPE

Better elements, better efficiency, better range.



FITTINGS

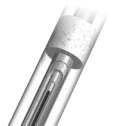
Stainless Steel > Chrome brass > Nylon

To prevent wear it is recommended to match the material on the antenna fitting to the material of the mount.



CONSTRUCTION

Ethafoam spacers protect the elements from vibration for greater durability. The outside shell is called the radome. A thicker radome also increases durability.



REMOVABLE

An antenna with a removable connection is easier to stow and replace.



BUILT TO LAST

Our pioneering ideas have made Shakespeare® the most trusted brand in the industry, and you can always depend on our products for superior performance.

Shakespeare® fiberglass antennas are built with precision — hand-soldered connections, brass and copper elements, strong mechanical joints and superior electronics.

The radiator and electrical elements are then encased in our exclusive Shakespeare fiberglass radomes.

PHASE III™

*High end deck hardware
meets performance.*



WARRANTY

Thick radome & ethafoam spacers


Silver-plated brass elements for added protection

High-gloss, non-yellowing protective finish

Quick connect feature compatible with a variety of cables

Versatile stainless steel ferrule assembly

SHAKESPEARE PHASE III

	FEATRES	BENEFITS
CONSTRUCTION	Thick radome & ethafoam spacers	Extreme durability
ELEMENTS	Silver-plated brass	Maximum efficiency
FERRULE	Heavy Duty Stainless Steel	Premium look with extreme durability and saltwater corrosion resistance
CONNECTOR	Connector at the base of antenna 	Easily remove an antenna without the hassle of re-installing cables
COAX CABLE	Compatible with a variety of cables, including low loss RG-8/X, RG-213, LMR 400, and Shakespeare Easy Route cables	Maximum flexibility
AVAILABLE BANDS	AIS, VHF, AM/FM	

GALAXY®

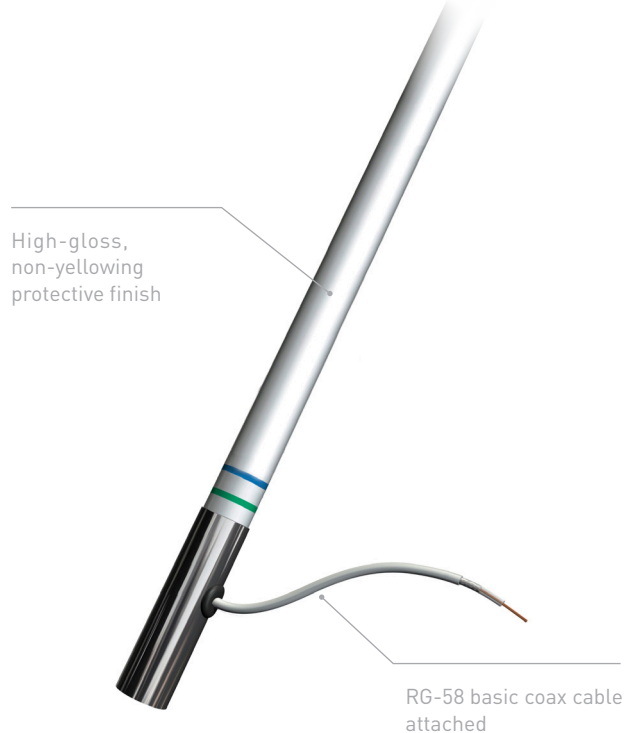
The industry standard for beauty and performance.



SHAKESPEARE GALAXY		
	FEATURES	BENEFITS
CONSTRUCTION	Thick radome & ethafoam spacers	Extreme durability
ELEMENTS	Thick brass	High efficiency
FERRULE	Stainless Steel	Great durability and saltwater corrosion resistance
CONNECTOR	Easy Route mini-end and screw-on connector included	Solder-free and easy routing installation
COAX CABLE	RG-8/X cable attached	High efficiency
AVAILABLE BANDS	AIS, VHF, AM/FM, SSB, CB	

Classic

Basic communication, navigation, & entertainment.



SHAKESPEARE CLASSIC		
	FEATURES	BENEFITS
CONSTRUCTION	Standard radome thickness	Basic durability
ELEMENTS	Brass and coaxial cable	Basic efficiency
FERRULE	Chrome plated brass or nylon	Good durability and saltwater corrosion resistance
CONNECTOR	Solder-type connector	Basic connector type
COAX CABLE	RG-58 basic coax cable attached	Basic efficiency
AVAILABLE BANDS	AIS, VHF, AM/FM, SSB, CB	

VHF



PHASE III™



Built for performance and durability, the flagship Phase III™ antenna will stand strong against high speeds and high winds. Combining our innovative construction of an ethafoam spacer system, silver plated element and thick radome for a sleek and luxurious appearance.

PHASE III™ VHF ANTENNA

- **Thick fiberglass radome finish**
durable high-gloss, white polyurethane non-yellowing finish
- **Stainless steel mounting sleeve**
Greater durability and rust prevention
- **12-sided facet**
Indexes and prevents the antenna from rotating during installation
- **Ethafoam spacer system**
Isolates the radiators from vibration for long, dependable service
- **50-239 quick connect**
Remove or install the antenna without twisting or reinstalling the coax
- **Silver plated elements**
Maximum range, clarity and efficiency
- Bandwidth of 3 MHz within 2.0:1 VSWR
- VSWR of <1.5:1 at 156.8 MHz

MODEL NO.	HEIGHT	SECTIONS	DB	SUGGESTED MOUNT	MAX INPUT POWER	DC GROUND	MATCHING ANTENNA
6018-R	18'	2	8dB	410-R	150 W	No - Read Open	—
6225-R	8'	1	6dB	4187-HD or 5187	150 W	Yes - Read Shorted	6235-R
6400-R	4'	1	3dB	4187-HD or 5187	150 W	No - Read Open	6396-AIS-R



GALAXY®



Galaxy® antennas have long been revered as the industry standard for both performance and quality. Following a 20-plus-year tradition, Shakespeare Galaxy® antennas ensure reliable communication through top notch materials and master craftsmanship with each and every antenna.

GALAXY® VHF ANTENNA

- **Thick brass and copper elements**
Greater range, clarity and efficiency
- **Stainless steel ferrule**
Prevents rust
- **20' RG-8/X low-loss cable plus a solder free screw on Easy Route PL-259 connector included**
Ease of install
- **High-gloss polyurethane finish**
Non-yellowing
- VSWR of <1.5:1 at 156.8 MHz
- Bandwidth of 3 MHz within 2.0:1 VSWR
- White/Fiberglass and Black/Fiberglass finishes.



MODEL NO.	HEIGHT	SECTIONS	DB	SUGGESTED MOUNT	MAX INPUT POWER	DC GROUND**	MATCHING ANTENNA	COLOR/FINISH
5018	17' 6"	2	9dB	410-R	150 W	No	—	white
5225-XT	8'	1	6dB	4187-HD or 5187	100 W	Yes	5225-XT-AIS	white
5226-XT	8'	1	6dB	4187-HD or 5187	100 W	Yes	6420-R	black
5230	14'	2	8dB	410-R	200 W	Yes	—	white
5309-R	23'	2	9dB	410-R	150 W	No	—	white
5399	9' 6"	2	6dB	4187-HD or 5187	100 W	Yes	—	white
5400-XT	4'	1	3dB	4187-HD or 5187	50 W	No	5420-XT	white
5401-XT	4'	1	3dB	4187-HD or 5187	50 W	No	5421-XT	black

**Yes = Yes - Read Shorted / No = No - Read Open
FELLECS-TECH Handelsgesellschaft mbH

inbox@fellecs-tech.com | +49 40 707 00 98 - 0 | www.fellecs-tech.com



Classic

The Classic Series covers the widest variety of vessels in the Shakespeare® family.

CLASSIC STICK VHF ANTENNA

- **Brass and copper elements**
Standard range and reception
- **Chrome-plated brass or nylon ferrule with standard 1"-14 thread**
Basic install
- **Smooth, durable, high gloss white/fiberglass finish**
Non yellowing
- VSWR of <1.5:1 at 156.8 MHz
- Utilizes the 15' RG 58 cable, PL-259 connector type, unless otherwise noted below*.

MODEL NO.	HEIGHT	SECTIONS	DB	CONNECTION	SUGGESTED MOUNT	MAX INPUT POWER	BANDWIDTH WITHIN 2.0:1 VSWR	DC GROUND**	MATCHING ANTENNA
396-1	5'	1	3dB	*	4187 or 4188-SL	50 W	5 MHz	No	—
399-1M	9' 6"	2	6dB	SO 239, L bracket	U bolts included	100 W	5 MHz	Yes	—
420	5'	1	3dB	*	Mount included	50 W	5 MHz	No	—
476	21'	1	10dB	SO 239	483 mast bracket	350 W	10 MHz	Yes	—
4018	19'	2	9dB	*	410-R	50 W	3 MHz	No	—
4018-M	19'	2	9dB	SO 239, u bolts	U bolts included	50 W	3 MHz	No	—
5101	8'	1	6db	*	4187 or 5187	50 W	5 MHz	Yes	5120
5102	8'	1	6dB	*	4187 or 5187	50 W	5 MHz	Yes	5120
5104	4'	1	3dB	*	4187 or 4188-SL	50 W	5 MHz	No	—
5206-N	8'	1	6dB	*	4186-U or 4187	50 W	5 MHz	No	—



Classic



The Classic Series covers the widest variety of vessels in the Shakespeare® family.

CLASSIC WHIP VHF ANTENNA

- Brass and copper elements provide standard range and reception
- Single section antennas with a VSWR of <1.5:1 at 156.8 MHz

MODEL NO.	HEIGHT	DB	CONNECTION	SUGGESTED MOUNT	MAX INPUT POWER	BANDWIDTH	DC GROUND**	COLOR/FINISH
5218	19"	0dB	magnetic mount, 15 ft RG 58 cable, PL-259 connector	Magnet mount included	25 W	7 MHz within 2.0:1 VSWR	No	Black/Metal
5241-R	3'	3dB	15 ft RG 58 cable, PL-259 connector	4187 or 5187	50 W	7 MHz within 2.0:1 VSWR	No	Stainless Steel
5244	3'	3dB	15 ft RG 58 cable, PL-259 connector	4186-U or 4187	50 W	7 MHz within 2.0:1 VSWR	No	White/Nylon
5250	3'	3dB	15 ft RG 58 cable, PL-259 connector	4186-U or 4187	50 W	7 MHz		Stainless Steel
5911	1'	0dB	12 ft RG 58 cable, PL-259 connector	Suction cup included	25 W	—	Yes	White/Nylon
5912	7'	0dB	50 239, Flush mount	Flush mount included	25t W	—	No	Black/Nylon

**Yes = Yes - Read Shorted / No = No - Read Open



5241-R

Classic



The Classic Series covers the widest variety of vessels in the Shakespeare® family.

CLASSIC SAILBOAT VHF ANTENNA

- Brass and copper elements provide standard range and reception
- Single section antennas with a VSWR of <1.5:1 at 156.8 MHz
- Does not contain a built-in DC ground connection (read open)
- All antennas come in a stainless steel finish except **5216**, which is a black/metal finish

MODEL NO.	HEIGHT	SECTIONS	DB	CONNECTION	SUGGESTED MOUNT	MAX INPUT POWER	BANDWIDTH WITHIN 2.0:1 VSWR	MATCHING ANTENNA
5215	3'	1	3dB	SO 239, L bracket	L bracket included	50 W	7 MHz	5215-AIS
5215-C-X	3'	2	3dB	60 ft RG 8X, PL-259 connector	L bracket included	50 W	7 MHz	5215-AIS
5216	15"	1	0dB	SO 239 L bracket	L bracket included	25 W	5 MHz	—
5242-A*	3'	1	3dB	SO 239 L bracket	L bracket included	50 W	7 MHz within 2.0:1 VSWR	5215-AIS



5215



QuickConnect™ antennas stem from the popularity of the quick connecting feature on Shakespeare's high-end Phase III® marine antennas, the QuickConnect™ product line brings you the ease of connecting and disconnecting your marine antenna in a series of entry-level antennas.

QUICKCONNECT™ VHF ANTENNA

- **QuickConnect™ system**

Screw or unscrew antenna to disconnect or connect

- **High quality connection**

No noise is generated due to vibrations

- **Splash protection cap**

Protects the connector on the mount when antenna is disconnected

- **Centerpin® PL-259 Connector**

An easy crimp-on type connector

- Base connector included for use with QuickConnect® mounts only

- Single section antennas with a VSWR of <1.5:1 at 156.8 MHz

- Maximum input power of 50 watts

- Bandwidth of 5 MHz within 2.0:1 VSWR

- Does not contain a built-in DC ground connection (read open)

MODEL NO.	HEIGHT	DB	SUGGESTED MOUNT	COLOR/FINISH
QC-3	3'	3dB	QCM-S, QCM-N, QCM-SR	Stainless Steel
QC-4	4'	3dB	QCM-S, QCM-SR	White/Fiberglass
QC-8	8'	6dB	QCM-S, QCM-SR	White/Fiberglass

Works with all **QCM Series Mounts**.
See page 40 for more details
and specifications.

FELLECS-TECH Handelsgesellschaft mbH

inbox@fellecs-tech.com | +49 40 707 00 98 - 0 | www.fellecs-tech.com







AIS

PHASE III™



Specially engineered and tuned to match AIS transceivers, this Phase III™ antenna enables reliable communication over marine AIS frequencies. Ethafoam spacers, thick radome and silver-plated elements enhance the antenna's technical performance and longevity.

PHASE III™ AIS ANTENNA

- **Silver plated elements**
Maximum range, clarity and efficiency
- **Stainless steel mounting sleeve**
Greater durability and prevents rust
- **SO-239 quick connect**
Remove or install the antenna without twisting or reinstalling the coax cable
- **12-sided facet**
Indexes and prevents the antenna from rotating during installation
- **Ethafoam spacer system**
Isolates the radiators from vibration for long, dependable service
- **Thick fiberglass radome with high-gloss polyurethane finish**
Durable and non-yellowing

MODEL NO.	6396-AIS-R
HEIGHT	4'
SECTIONS	1
DB	3dB
CONNECTION	SO 239, Mounting Sleeve included
SUGGESTED MOUNT	4187-HD
MAX INPUT POWER	50 Watts
VSWR	<1.5:1 at 162 MHz
BANDWIDTH	5 MHz within 2.0:1 VSWR
DC GROUND	Yes - Read Shorted
COLOR/FINISH	White/Fiberglass
MATCHING ANTENNA	6400-R



GALAXY®



Cruise with confidence and communicate reliably over the AIS band using the Galaxy® AIS antennas.

Specifically designed and tuned to work with all popular AIS transceivers, this antenna features a commercial-grade fiberglass construction to ensure performance and durability. These benefits combined with the great look of our Galaxy® high-gloss white finish signifies a standard of quality to be admired.

GALAXY® AIS ANTENNA

- **Thick brass and copper elements**
Greater range, clarity and efficiency
- **Stainless steel ferrule**
Prevents rust
- **20ft RG-8/X low-loss cable plus a solder free screw on PL-259 connector included**
Ease of install
- **High-gloss polyurethane finish**
Non-yellowing
- Antennas come in a single section with a built-in DC ground connection
- VSWR of <1.5:1 at 162 MHz

MODEL NO.	HEIGHT	DB	SUGGESTED MOUNT	MAX INPUT POWER	BANDWIDTH	MATCHING ANTENNA
5225-XT-AIS	8'	6dB	4187-HD or 5187	100 W	3 MHz within 2.0:1 VSWR	5225-XT
5396-AIS	4'	3dB	4187 or 4188-SL	50 W	5 MHz within 2.0:1 VSWR	5400-XT



Classic



The Classic Series covers the widest variety of vessels in the Shakespeare® family.

CLASSIC AIS ANTENNA

- **Brass and copper elements**
Standard range and reception
- **Chrome-plated brass or nylon ferrule with standard 1"-14 thread**
Basic install
- **Smooth, durable, high gloss finish**
Non yellowing
- Single section antennas with 3dB gain and 50 watt max input power
- Does not contain a built-in DC ground connection (read open)
- VSWR of <1.5:1 at 162 MHz

MODEL NO.	HEIGHT	CONNECTION	SUGGESTED MOUNT	BANDWIDTH	COLOR/FINISH	MATCHING ANTENNA
396-1-AIS	4'	SO 239	U bolts (included)	6 MHz within 2.0:1 VSWR	White/Fiberglass	—
5215-AIS	3'	SO 239	L bracket (included)	7 MHz within 2.0:1 VSWR	Stainless Steel	5215
5250-AIS	3'	15 ft RG 58 cable, PL-259 connector included	4187 or 4188-SL	7 MHz within 2.0:1 VSWR	Stainless Steel	5250



396-1-AIS

BROADBAND



GALAXY®



Galaxy® antennas have long been revered as the industry standard for both performance and quality. Following a 20-plus-year tradition, Shakespeare Galaxy® antennas ensure reliable communication through high-quality materials and master craftsmanship with each and every antenna.

GALAXY® BROADBAND ANTENNA

- **Thick brass and copper elements**
Greater range, clarity and efficiency
- **Stainless steel ferrule**
Prevents rust
- **20' RG-8/X low-loss cable with PL-259® connector**
- **High-gloss polyurethane finish**
Non-yellowing

MODEL NO.	HS-2774-1-R
HEIGHT	6' 5"
SECTIONS	1
DB	4dB
CONNECTION	20' RG8X cable, PL-259 connector included
SUGGESTED MOUNT	4187-HD or 5187
MAX INPUT POWER	125 Watts
VSWR	2.0:1 within the bandwidth
BANDWIDTH	136 MHz - 174 MHz
DC GROUND	Yes - Read Shorted
COLOR/FINISH	White/Fiberglass



PHASE III™



Built for maximum performance and durability, the flagship Phase III™ antenna will stand strong against the most punishing conditions. The commercial-grade construction utilizes an ethafoam spacer system, extra thick fiberglass, silver plated internal element, and super-rugged hardware that provides peace-of-mind when it matters most.

PHASE III™ BROADBAND ANTENNA

- **Silver plated elements**
Maximum range, clarity and efficiency
- **Stainless steel mounting sleeve**
Greater durability and prevents rust
- **SO-239 quick connect**
Remove or install the antenna without twisting or reinstalling the coax cable
- **12-sided facet**
Indexes and prevents the antenna from rotating during installation
- **Ethafoam spacer system**
Isolates the radiators from vibration for long, dependable service
- **Thick fiberglass radome with high-gloss polyurethane finish**
Durable and non-yellowing



MODEL NO.	6500-WB
HEIGHT	4'
SECTIONS	1
DB	3dB
CONNECTION	UHF Female (SO-239 type) included
SUGGESTED MOUNT	Stainless steel mounting bracket with U-bolts, for mounting on mast, rails, or screwed directly onto bulkheads included
MAX INPUT POWER	100 Watts
VSWR	<1.5:1 at 156 -162 MHz, VSWR < 2:1 at 145 -165 MHz
BANDWIDTH	145 MHz - 165 MHz
DC GROUND	Yes - Read Shorted
COLOR/FINISH	White/Fiberglass





AM/FM

PHASE III™



Our master craftsmen take AM/FM reception to new heights with these hand soldered, hand assembled and hand finished AM/FM antennas. The quality build of this single section 8' antenna ensures high performance and durability. The high-gloss white polyurethane finish protects the fiberglass from yellowing under UV rays, providing a lasting look of beauty for years to come.

PHASE III™ AM/FM ANTENNA

- **Silver plated elements**
Maximum range, clarity and efficiency
- **Stainless steel mounting sleeve**
Greater durability and prevents rust
- **S0-239 quick connect**
Remove or install the antenna without twisting or reinstalling the coax cable
- **12-sided facet**
Indexes and prevents the antenna from rotating during installation
- **Ethafoam spacer system**
Isolates the radiators from vibration for long, dependable service
- **Thick fiberglass radome with high-gloss polyurethane finish**
Durable and non-yellowing
- Includes a 20 ft RG-62 cable, Motorola plug installed
- Suggested Mount: 4187-HD or 5187

6235-R

HEIGHT

8'

MATCHING ANTENNA

6225-R





GALAXY®



Bring in those stations! These Galaxy® AM/FM antennas are perfect for entertainment. Their sturdy construction and outstanding performance make them an excellent choice for T-tops, Hard-tops and other elevated mounting positions. Extra rigid, extra tough.

GALAXY® AM/FM ANTENNA

- **Thick brass and copper elements**
Greater range, clarity and efficiency
- **Stainless steel ferrule**
Prevents rust
- **High-gloss polyurethane finish**
Non-yellowing
- **Each antenna is one section**
No assembly required
- 20 ft RG-62 cable, Motorola plug installed

MODEL NO.	HEIGHT	SUGGESTED MOUNT	COLOR/FINISH	MATCHING ANTENNA
5235-XT	8'	4187-HD or 5187	White/Fiberglass	5225-XT
5420-XT	4'	4187 or 5187	White/Fiberglass	5400-XT
5421-XT	4'	4187 or 5187	Black/Fiberglass	5401-XT

Classic



4351 & 5120

3' & 8' AM/FM Antennas

When you're far from your favorite stations, these antennas help bring them in loud and clear, without depleting your net worth.

- **Brass and copper elements**
Standard range and reception
- **Chrome-plated brass or nylon ferrule with standard 1"-14 thread**
Basic install
- **Includes 15ft RG-58 cable, which can be cut to size, and a PL-259 connector**
Standard cable and connector
- **High-quality non-yellowing white fiberglass construction** with smooth, durable, high gloss finish



MODEL NO.	HEIGHT	CONNECTION	SUGGESTED MOUNT	MATCHING ANTENNA
4351	3'	10 ft RG 62 Cable with Motorola plug attached included	4187 or 4186-U	5250
5120	8'	15 ft RG 62 cable, Motorola plug installed included	4187 or 5187	5101

Classic



4353

24" AM/FM Antenna

This innovative design lets you put an AM/FM antenna on your boat where it won't get in the way. It is a 24" clear tape with embedded antenna elements.

Its permanent adhesive strip lets you attach it quickly and easily onto your boat's windshield or any smooth, nonmetallic surface. The antenna comes with a 6ft cable and attached Motorola® type plug.

- Attaches easily with permanent, one-section self-adhesive strip
- 6' cable with Motorola® plug attached



SS B



WARRANTY

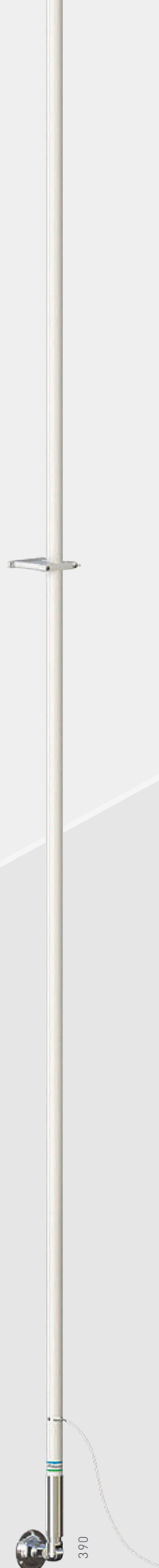
Classic

These Classic SSB antennas are outstanding performers. Two styles that are electrically the same, but one designed in three sections for convenience in shipping. For use in calm to moderate seas. Reinforced insulating qualities allow input power up to 1 kw. Conductors are permanently sealed in Shakespeare® white fiberglass.

CLASSIC SSB ANTENNA

- **Brass and copper elements**
Standard range and reception
- **Chrome-plated brass ferrule with standard 1"-14 thread**
Basic install
- **Smooth, durable, high gloss finish**
Non yellowing

MODEL NO.	390 / 393
HEIGHT	23'
SECTIONS	Model No. 390: 2 Model No. 393: 3
CONNECTION	Side Feed Termination band Uses GTO 15 wire (not supplied)
SUGGESTED MOUNT	410-R
MAX INPUT POWER	1,000 Watts
BANDWIDTH	2-30 MHz
COLOR/FINISH	White/Fiberglass



CB



GALAXY®



WARRANTY

A tuneable, easily installed CB antenna for top performance in demanding situations. Connector is supplied but not installed, so only a 3/8" hole is required for passage of the cable. Coax length can be altered on this antenna.

GALAXY® CB ANTENNA

- **Thick brass and copper elements**
Greater range, clarity and efficiency
- **Stainless steel ferrule**
Prevents rust
- **20ft RG-8/X low-loss cable plus a solder free screw on PL-259 connector**
Ease of install
- **High-gloss polyurethane finish**
Non yellowing

MODEL NO.	5223-XT
HEIGHT	8'
SECTIONS	1
CONNECTION	20 ft RG8X cable, PL-259 connector included
SUGGESTED MOUNT	4187 or 5187
MAX INPUT POWER	25 Watts
VSWR	<1.5:1 at Channel 19
BANDWIDTH	27 MHz Citizens Band
DC GROUND	Yes - Read Shorted
COLOR/FINISH	White/Fiberglass
MATCHING ANTENNA	5225-XT





WHEN IT MATTERS MOST





ACCESSORIES

CHOOSING THE RIGHT MOUNT

Choosing the right antenna mount is equally as important as selecting the right antenna to ensure reliable communications, and avoid damage to either the antenna or the vessel.

MOUNT STYLE

Select a mount style designed for the installation location and method that works best for **your boat**. When in doubt, consult your dealer.

Remember to **account for lay down room** to clear bridges, overpasses and other obstacles.

SUPPORT

When using a **two-piece antenna** greater than **10'** an upper support clamp should also be installed.

- **Antennas 14'-18'**, upper clamp should be **3' to 5'** from the base of the antenna.
- **Antennas 18'-23'**, upper clamp should be **4' to 8'** from the base of the antenna.

Positioning the upper clamp to high or too low will greatly increase the potential for structural failure.

Many Shakespeare mounts include a special cable slot that eliminates removal of most factory installed connectors!



RATCHET MOUNTS

Ratchet mounts adapt your installation to surfaces or sides and permit easy, fast lay down to avoid overhead obstructions.



4186 / 4186-U (unassembled)

Four-way ratchet design with handle. Not for use with antennas longer than 8' in self-supporting mode — this nullifies all warranties.

CONSTRUCTION	Solid Nylon
MOUNTING	Deck or side
BOLT HOLES	5/16" diameter // 3" x 1½" on center
THREAD	Standard 1"-14 (male)



4187 / 4187-HD (heavy duty)

Special cable slot eliminates removal of most factory-installed connectors. Heavy duty (HD) option for applications where extra strength and rigidity is needed.

CONSTRUCTION	Stainless Steel
MOUNTING	Deck or side
BOLT HOLES	9/32" diameter // 3" x 1½" on center
THREAD	Standard 1"-14 (male)



5187

Five-degree teeth for finer angle adjustment than standard ratchet mounts. Special cable slot eliminates removal of most factory-installed connectors.

U.S. PATENT NO.	7,525,507
CONSTRUCTION	Stainless Steel
MOUNTING	Deck or side
BOLT HOLES	9/32" diameter // 3" x 1½" on center
THREAD	Standard 1"-14 (male)

RAIL MOUNTS

Rail mounts offer fast, easy installation and a choice of lay down and coax exit configurations.



4720

Economy Rail Mount

Versatile design fits almost any application.

CONSTRUCTION	Stainless Steel
HEIGHT	7/8" - 1 1/4" rails vertical or horizontal square or round
THREAD	Standard 1"-14 (male)



4190

Special cable slot eliminates removal of most factory-installed connectors

CONSTRUCTION	Stainless steel
HEIGHT	7/8" - 1" rails vertical, horizontal, or angled
THREAD	Standard 1"-14 (male)



4188-SL

Heavy duty construction. Special cable slot eliminates removal of most factory-installed connectors

CONSTRUCTION	Stainless steel
HEIGHT	1" - 1 1/4" rails vertical or horizontal
THREAD	Standard 1"-14 (male)

FLANGE MOUNTS

Flange mounts offer easy installation and seamless appearance.



4710

Heavy-duty, low profile, for GPS, Marine TV, and shorter antennas.

CONSTRUCTION	Stainless steel
HEIGHT	1"
THREAD	Standard 1"-14 (male)



4365

Straight mount, perfect for radar arches.

CONSTRUCTION	Stainless steel
HEIGHT	4"
THREAD	Standard 1"-14 (male)



495-B

Lift-N-Lay

This innovative mount enables your antenna to Lift-n-Lay with a positive snap action. Leveling plate provided for mounting to a sloping deck. Handles antennas up to 8'

CONSTRUCTION	White Polycarbonate
HEIGHT	4"
THREAD	Standard 1"-14 (male) Includes insert adaptable to 3/8"-24 thread antennas

MAST MOUNTS



4715

Pliable rubber pad cushions the antenna, sturdy construction holds it in place.

ATTACHES

1" - 2" diameter antenna to

1" - 2" diameter mast

INCLUDES

2 clamps



483

Galvanized metal mast clamps kit

WORKS WITH

Shakespeare® 476 antenna

INCLUDES

2 clamps

MOUNT ACCESSORIES

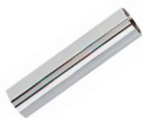


414

Heavy-Duty Rubber Shim Kit for Ratchet Mounts

Kit of four shims, two each with front/back and side/side slope. Each shim adds a half-notch (5°) tilt. Stack them for extra height or for compound angles.

USE WITH Any Shakespeare® ratchet mount



4006 Double Female Ferrule

4 1/2" Stainless Steel ferrule with 1"-14 female threads at both ends

MOUNT KITS



81-S

Stainless Steel Swivel Mount

For deck or side mounting of Style 408-R upper support bracket (sold separately). Base is dual jointed, free-pivoting, and allows easy lowering of antenna for clearing overhead obstructions.

WORKS WITH

Style 408-R upper support bracket (sold separately)

THREAD

Standard 1"-14 thread.



408-R

Stand-Off Bracket Mounting Kit

Insulated stand-off bracket made of white molded plastic.

WORKS WITH

Styles 81-S Swivel Mounts (sold separately) and antennas of 1 1/8" or 1/2" (using inserts provided).



410-R

Swivel Mount Mounting Kit

Combines the Style 81-S Swivel Mount with the Shakespeare Style 408-R molded upper bracket.

The provided inserts are for 1 1/8" and 1 1/2".



QUICKCONNECT™ MOUNTS

Easy removal of antennas without the hassle of re-installing cables.

- Centerpin® PL-259 Connector included for easy solder-free installation.
- Water and dust protection cap: Stays fastened to mount to prevent it from getting lost.

QCM-S

QuickConnect™

Stainless Steel Ratchet Mount



Versatile four-way ratchet action and fast-release handle design for quick and easy laydown. For deck or side mounting of QuickConnect antennas.

CONSTRUCTION	Stainless steel
CONNECTION	Centerpin® PL-259-CP-G
MOUNTING	Deck or side
BOLT HOLES	9/32" diameter // 3" x 1½" on center
THREAD	Standard 1"-14 (male)
MAX HEIGHT OF ANTENNA	8'

QCM-SR

QuickConnect™

Stainless Steel Ratchet Rail Mount



QuickConnect Stainless Steel Ratchet Rail Mount Versatile four-way ratchet action and fast-release handle design for quick and easy laydown. For rail mounting of QuickConnect antennas on 1" (25.4mm) to 1½" (38.1mm) vertical, horizontal or angled rails.

CONSTRUCTION	Stainless steel
CONNECTION	Centerpin® PL-259-CP-G
MOUNTING	Deck or side
BOLT HOLES	9/32" diameter // 3" x 1½" on center
THREAD	Standard 1"-14 (male)
MAX HEIGHT OF ANTENNA	8'

QCM-N

QuickConnect™

Nylon Ratchet Rail Mount



Versatile four-way ratchet action and fast-release handle design for quick and easy laydown. For deck or side mounting of QuickConnect antennas.

CONSTRUCTION	Nylon
CONNECTION	Centerpin® PL-259-CP-G
MOUNTING	Deck or side
BOLT HOLES	9/32" diameter // 3" x 1½" on center
THREAD	Standard 1"-14 (male)
MAX HEIGHT OF ANTENNA	4'

SPEAKERS

Shakespeare® marine speakers are rated from 5W to 40W power, covering radio output and hailer/listen-back applications. All are engineered to withstand the rigors of the marine environment.

ES-2

2.25" Speaker



A 2.25" external speaker with Mylar® cone in a compact white housing to withstand the rigors of the marine environment. Comes with a ratchet-action mounting bracket, hardware mounting kit and six feet of cable with mini phone plug installed.

SIZE	2.25"
OHM	4
MAX POWER	5 watts (RMS)

HS-5A

5" External Hailer Speaker



HS-5A Hailer Horn Speaker is made with a durable plastic weather-proof construction. 5" with 15 watts, this hailer is compact but efficient.

SIZE	5"
OHM	4
MAX POWER	15 watts

ES-4

4" Speaker



A 4", 4-ohm, deluxe speaker with Mylar® cone and white plastic cabinet for protection against moisture. Comes with swivel mounting bracket, hardware mounting kit and six feet of cable with "mini phone" plug installed.

SIZE	4"
OHM	4
MAX POWER	8 watts (RMS)

HS-40

7" PA/Hailer Horn Speaker



PA/Hailer Horn Speaker Gets your point across with up to 40 watts power handling capacity. This speaker also supports a loud-hailer listen-back function. It is made of high impact white plastic and includes a tilt mount bracket.

SIZE	7" wide x 13" deep
OHM	8-ohms,
POWER	40 Watts @ 400 Hz
FREQUENCY	250 Hz to 8 KHz
TEMP RANGE	-40° to 176° F

CHOOSING THE RIGHT CABLE

Shakespeare uses low-loss RG-8X throughout the Galaxy® antenna line. For optimum performance from your VHF, HF/SSB and cellular communication systems, the cable should be kept as short as possible.

- Length of run **less than 20'** - RG-58 cable
- Length of run **greater than 20'** - RG-8X, RG-8A/U, RG-213 are better choices offering thicker and more robust jacketing and better efficiency.

Shakespeare offers a full line of field-installable connectors that enable a custom and optimized installation on your vessel.

TIP

Be sure to thoroughly review all Shakespeare antenna instructions sheets, as some supplied cables may not be cut or altered.

4078-50

RG-8X Low-Loss Coax Cable

The cable that connects your antenna to your radio can make or break signal quality—literally.

LENGTH 50 FT.
IMPEDANCE 50-ohm



4078-20-ER

Easy Route Coax Cable Kit

20' RG-8X cable extension Cable Kit for VHF/AIS/CB Antennas

LENGTH 20 FT.
CONNECTION Easy Route FME



4079

PL-259 Coaxial Cable

Great for connecting meters and switches (sold separately) like Shakespeare's **ART-3** and **AS-2**

LENGTH 3 FT.
CONNECTION PL-259 (VHF) factory installed



PIII-20-ER

Coaxial Cable Kit

RG-8X cable with FME mini-ends

USE WITH **Phase III VHF/AIS** antenna
LENGTH 20 FT.
CONNECTION 2 Screw-on PL-259s



SIRIUSXM™ CABLING & CONNECTORS

35' SiriusXM® replacement cable for use with SRA-50 antennas. SMB & TNC connectors installed.

SRC-35 LENGTH 35 FT.
SRC-50 LENGTH 50 FT.
SRC-90 LENGTH 90 FT.



4352

AM/FM Extension Cable

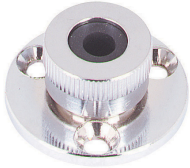
93-ohm RG-62 cable with male and female Motorola connectors

LENGTH 10 FT.
CONNECTION Motorola (AM/FM)



CONNECTORS & ADAPTERS

Shakespeare offers an extensive line of marine grade connectors and adapters for antenna installations.

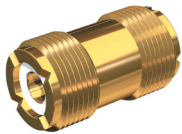


4184

Chrome-plated Cable Outlet

Chromed brass, cable outlet to neatly pass cables through bulkheads or hardtops. Rubber internal grommet grips the cable and provides a neat, water-resistant installation

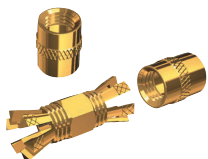
USE WITH RG-8/AU, 8X, 58, 59, 213 coax cable



PL-258-G

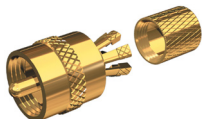
Barrel connector

FOR PL-259 ended cables



PL-258-CP-G

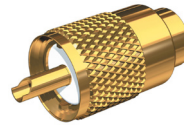
USE WITH RG-8X or RG-58/AU coax cable



PL-259-CP-G

USE WITH RG-8X or RG-58/AU coax cable

Gold-plated brass minimizes connector-borne signal loss.



PL-259-G

FOR RG8/AW & RG-213 Coax

PL-259-58-G

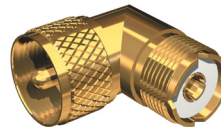
FOR RG-58 Cable

PLUS UG175 adapter & DooDad®

PL-259-8X-G

FOR RG-8X Cable

PLUS UG175 adapter & DooDad®



RA-259-239-G

Right-angle Adapter

FOR PL-259 to SO-239

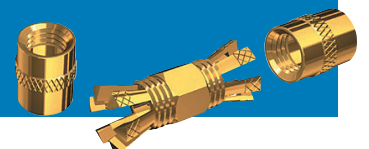


PL-259-ER

Screw on PL-259 Connector

USE WITH Easy Route cables with FME Mini ends

Splice cables or repair ends with ease using solderless Centerpin Connectors.



GALAXY®



Constructed of high-quality Shakespeare white fiberglass, and finished to match Galaxy® antennas, this 1½" diameter extension mast can be used to increase height of an antenna and thus improve effective range, or to boost placement of an antenna above on-board obstructions.

GALAXY® 5228 SERIES

- **Stainless steel** upper and lower ferrules with standard 1"-14 thread
- **High-gloss polyurethane finish**
Non-yellowing
- **Each antenna is one section**
No assembly required
- **Required Mount:**
Style 409-R or 410-R Mounting Kit (sold separately)

MODEL NO.	HEIGHT	SECTIONS	COLOR/FINISH
5228	8'	1	White/Fiberglass
5228-1	1'	1	White/Fiberglass
5228-2	2'	1	White/Fiberglass
5228-4	4'	1	White/Fiberglass



Classic

The Classic Series covers the widest variety of vessels in the Shakespeare® family.



CLASSIC® 4700 SERIES

Heavy-duty stainless steel extension mast
Standard 1"-14 thread male and female fittings.



MODEL NO.	HEIGHT	SECTIONS	COLOR/FINISH
4700	6"	1	Stainless Steel
4700-1	1'	1	Stainless Steel
4700-2	2'	1	Stainless Steel

4364-B

One-inch diameter extension mast for light to moderate duty applications. White molded polycarbonate male upper and female lower 1"-14 thread.



FOR Marine TV antennas
LENGTH 1'
THREAD Standard 1"-14 thread.

CLASSIC® 4008 SERIES

A sturdy, lightweight, 1½" diameter extension mast manufactured of structurally strong fiberglass with hollow interior, for passage of your antenna's cable.

- **Chrome-plated brass ferrules**
- **Stainless steel** upper and lower ferrules with standard 1"-14 thread

MODEL NO.	HEIGHT	SECTIONS	COLOR/FINISH
4008	8'	1	White/Fiberglass
4008-4	4'	1	White/Fiberglass



SPLITTERS/SWITCHES

ART-3

Tester



No need to call for a radio check when you have this compact, easy to use, unit on-board. Unlike other meters in its class, the ART-3 tests receiver function as well as output power and VSWR (antenna efficiency). It is powered by an internal battery or can be connected to 12 VDC with the supplied power cable. Battery level can be checked at the flip of a switch. No serious boater should be without an ART-3.

FREQUENCY RANGE	155-158 MHz
RF POWER SCALE	<30 watts
IMPEDANCE	50 OHM
ACCURACY	+/-10%
CONNECTORS	SO-239

Style 4079 one-meter cable available (sold separately) to connect the ART-3 to your VHF Radio.

4357-S

AM/FM/VHF Marine Band Separator



Enables boaters to operate AM/FM and VHF radios simultaneously without the need for separate antennas, and without interfering with VHF performance.

MAX POWER	25
CONNECTION	PL-259 (VHF) / Motorola (AM/FM)

AS-2

Switch



This automatic switch toggles two radios to one antenna. When you key the microphone on one of the radios, it switches the antenna to it automatically. The radio stays locked onto the antenna until the automatic switch detects a transmit from the other radio.

FREQUENCY RANGE	<600 MHz
VSWR	Below 1.2:1
RF POWER SCALE	<30 watts
CONNECTORS	SO-239
POWER SUPPLY	12vDC @ 200MA
SENSING/SWITCH TIME	<100 ms

5257-S

Antenna Splitter

With only one Antenna this splitter allows you to use VHF, AIS (receive only) & AM/FM Stereo.



REPLACEMENT TIPS



4202 FOR 5230 Antenna

4204 FOR 4018 & 4018-M Antennas

4318 FOR 5018 and 5309-R VHF Antennas



FELLECS TECH

Ihr Partner für Funktechnik

www.fellecs-tech.com

inbox@fellecs-tech.com

PICTURED: SCOUT™ LXF SPORTFISH