

ICOM

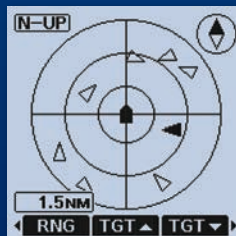
IC-M94DE

VHF MARINE TRANSCEIVER WITH DSC & AIS RECEIVER

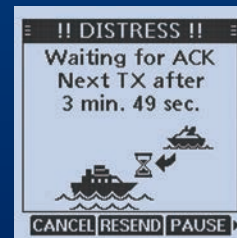


AIS Traffic Info, Now in Your Hand

- ▶ AIS Receiver and Class-H DSC in One Package



AIS screen



DSC ACK screen

- ▶ 6 W* RF Output Power
* 5 W for AUS version.
- ▶ Class-Leading 1500 mW Audio
- ▶ Simplified Navigation Function
- ▶ 10 Hours (approx.) of Operating Time*
* Typical operation with TX: RX: Standby= 5: 5: 90 duty ratio when the Power save function is ON.
- ▶ Float'n Flash and MOB Auto Set Functions

AIS Receiver and DSC in One Marine Handheld

AIS receiver and DSC function add further assurance to your safety at sea. The integrated AIS receiver displays vessel traffic information on the screen. The AIS target call function allows you to easily set up a DSC individual call. Distress calls can be made with the rear panel Distress button.



DISTRESS button

6 W RF Output Power and 10 Hours of Operating Time

The IC-M94DE's 6 watts*¹ of transmit power provides extended communication range for the user. The supplied BP-306 high capacity 2400 mAh (typical) Li-ion battery, provides 10 hours of operating time, under normal conditions*².

* ¹ 5 W for AUS version

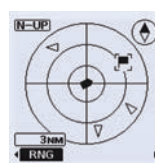
* ² Approximate, typical operation with TX: RX: Standby= 5: 5: 90 duty ratio when the Power save function is ON.

Class-Leading 1500 mW Audio Output

Icom's custom high-power capacity speaker delivers a loud 1500 mW (typical) audio output with improved acoustic sound clarity for noisy maritime environments.

Simplified Navigation Function

The Navigation function guides you to a specified waypoint. You can assign up to 50 favourite fishing spots or destinations as waypoints.



Navigation screen

Float'n Flash and MOB Auto Set Functions






If the IC-M94DE falls into the water, it will float and the LCD screen, keys and rear panel Distress button will flash helping you to retrieve it. Pressing the distress button while the Float'n Flash is working will transmit the MOB distress signal.

And More

- Integrated GPS receiver
- Active noise cancelling technology
- IPX7 waterproof (1 m depth of water for 30 minutes)
- Dualwatch and Tri-watch functions
- Favourite channel function
- Supports 4-digit channels
- AquaQuake™ prevents audio degradation from a water-logged speaker

OPTIONS

Some options may not be available in some countries. Please ask your dealer for details.

RECHARGEABLE Li-ion BATTERY PACK BP-306 Li-ion 7.2 V, 2280 mAh (minimum) 2400 mAh (typical) Provides 10 hours* of operating time. Same as supplied. * Approximate, Typical operation with 5:5:90 (Power save ON)	DESKTOP CHARGER  BC-251 Charges the BP-306 (in the radio) in 3.5 hours (approx.). Same as supplied.	AC ADAPTERS  BC-242/BC-123S Use with BC-251 (Photo shows BC-242)	SPEAKER-MICROPHONES  HM-228 IPX7 compact type HM-165 IPX7 rugged type. Floats in water with the radio.
LEATHER BELT HANGERS  MB-96FL Long fixed type MB-96F Fixed type	CIGARETTE LIGHTER CABLE  CP-25H For use with BC-251	ANTENNA FA-SC59V Same as supplied BELT CLIP MB-133 Same as supplied	

SPECIFICATIONS

GENERAL		
Frequency range	TX RX DSC AIS (RX)	156.000–161.450 MHz 156.000–163.425 MHz 156.525 MHz 162.025 MHz
Usable channel groups	INT, USA* and ATIS* channels * Available depending on version	
Type of emission	16K0G3E (FM), 16K0G2B (DSC) 16K0GXW (AIS)	
Current drain (at 7.2 V DC)	TX (6 W/1 W output) RX (Inter SP/Exter SP Max. audio)	1500 mA/700 mA (approx.) 700 mA/350 mA (approx.)
Operating temperature range	–15°C to +55°C	
Antenna impedance	50 Ω	
Dimensions (W × H × D) (projections not included)	60.9 × 145.8 × 43.8 mm	
Weight (approximate)	357 g (With BP-306, antenna, MB-133)	
TRANSMITTER		
Output power (Hi/Low)	6 W/1 W (5 W for AUS version)	
Max. frequency deviation	±5 kHz	
Frequency stability	±1.5 kHz	
Spurious emissions	0.25 μW	
RECEIVER		
Sensitivity (at 20 dB SINAD)	–6 dBμ emf typical	
DSC receiver (at 1% BER)	–3 dBμ emf typical	
AIS receiver (at 20% PER)	–107 dBm	
Squelch sensitivity (Threshold)	–6 dBμ emf typical	
Adjacent channel selectivity	70 dB	
DSC receiver (at 1% BER)	73 dBμ emf	
Spurious response	70 dB	
DSC receiver (at 1% BER)	73 dBμ emf	
Intermodulation	68 dB	
DSC receiver (at 1% BER)	68 dBμ emf	
Hum and noise	40 dB	
Audio output power	Internal SP (at 10% distortion)	1500 mW typical (8 Ω load)
	External SP	350 mW typical (8 Ω load)
Measurements made in accordance with EN302 885 and IEC62238. All stated specifications are subject to change without notice or obligation.		

Applicable U.S. Military Specifications & IP Rating

Standard	MIL 810G	
	Method	Procedure
Low Pressure	500.5	I, II
High Temperature	501.5	I, II
Low Temperature	502.5	I, II
Temperature Shock	503.5	I-C
Solar Radiation	505.5	I
Rain Blowing/Drip	506.5	I, III
Humidity	507.5	II
Salt Fog	509.5	–
Dust Blowing	510.5	I
Immersion	512.5	I
Vibration	514.6	I
Shock	516.6	I, IV

Also meets equivalent MIL-STD-810-C, -D, -E and -F.

Ingress Protection Standard	
Water	IPX7 (Waterproof protection)

Supplied accessories:

- BP-306 battery pack
- BC-251 battery charger
- AC adapter*
- MB-133 belt clip
- Antenna
- Hand strap

* May differ depending on version.

Icom, Icom Inc. and the Icom logo are registered trademarks of Icom Incorporated (Japan) in Japan, the United States, the United Kingdom, Germany, France, Spain, Russia, Australia, New Zealand and/or other countries. AQUAQUAKE is a trademark of Icom Incorporated. All other products or brands are registered trademarks or trademarks of their respective holders.

Icom Inc. 1-1-32, Kamiminami, Hirano-Ku, Osaka 547-0003, Japan Phone: +81 (06) 6793 5302 Fax: +81 (06) 6793 0013

www.icomjapan.com

Count on us!

Icom America Inc.
www.icomamerica.com

Icom (Europe) GmbH
www.icomeurope.com

Icom (Australia) Pty. Ltd.
www.icom.net.au

Icom Canada
www.icomcanada.com

Icom Spain S.L.
www.icomspain.com

Icom Asia Co., Ltd.
www.icomasia.com

Icom Brazil
E-mail: sales@icombrasil.com

Icom (UK) Ltd.
www.icomuk.co.uk

Icom France s.a.s.
www.icom-france.com

Your local distributor/dealer:

FELLECS TECH

Ihr Partner für Funktechnik

www.fellecs-tech.com

inbox@fellecs-tech.com